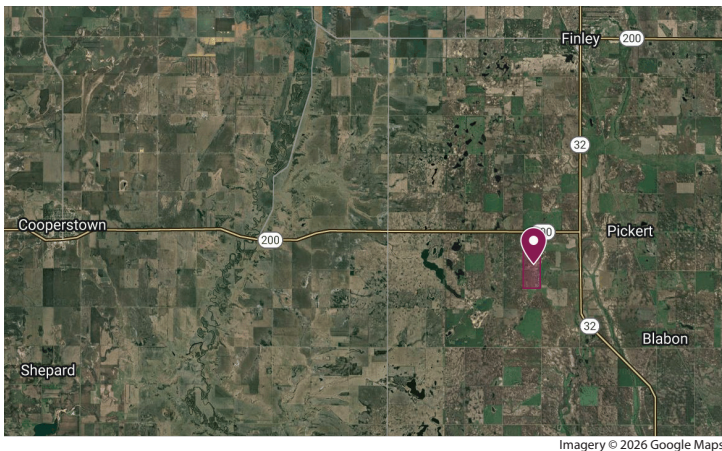


# LAND FOR SALE



## Steele County, North Dakota

**320 +/- Acres in Greenview Township**



Imagery © 2026 Google Maps

### **SEALED BID SALE DEADLINE**

**9:00 am (Central Time) Friday, February 13, 2026**

### **LEGAL DESCRIPTION**

Steele County, Greenview Township  
SE1/4 of Section 25 & NE1/4 of Section 36, T146 R57W

### **PROPERTY INFORMATION**

320 deeded acres / 294.66 FSA tillable acres

### **LAND LOCATION**

From the intersection of ND Highways 32 and 200 south of Finley, one mile west on 200 and one-half mile south will place you at the northeast corner of the parcel.

### **BROKER'S COMMENTS**

Productive Steele County farmland with mainly loam soils. Previous sellers reserved 100% of mineral rights.

## **ACRES & SHARES** LLC

LAND. BEET STOCK. BROKERAGE.

**JAYSON MENKE / Broker**  
[jayson.menke@acresandshares.com](mailto:jayson.menke@acresandshares.com)



## LAND INFO

### FSA INFORMATION: SE1/4 OF SECTION 25

CROP	BASE (acres)	YIELD (bushels)
Wheat	36.87	59
Soybeans	110.60	28

### NE1/4 OF SECTION 36

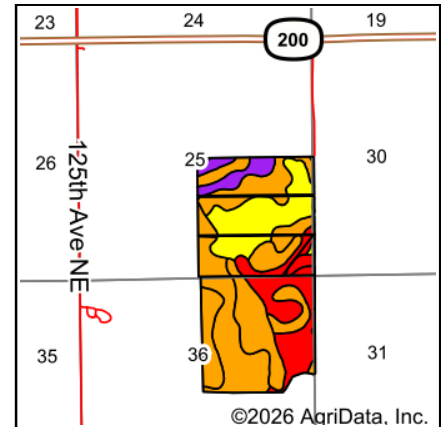
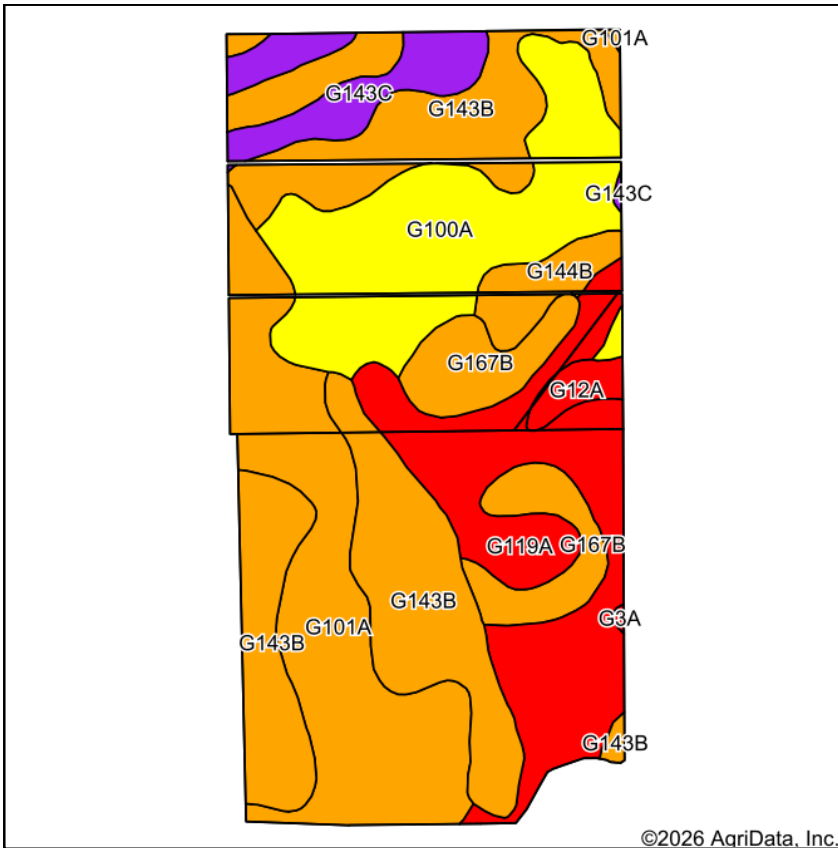
CROP	BASE (acres)	YIELD (bushels)
Wheat	18.74	57
Soybeans	122.70	27

### 2025 DISCOUNTED REAL ESTATE TAXES

\$3,081.52

Disclosure: Brochure information gathered from sources deemed reliable. Acres & Shares, LLC does not guarantee its accuracy. Interested Buyers should complete personal due diligence regarding the property.

## SOIL MAP



State: **North Dakota**  
 County: **Steele**  
 Location: **25-146N-57W**  
 Township: **Greenview**  
 Acres: **300.25**  
 Date: **1/1/2026**

**ACRES & SHARES<sup>LLC</sup>**  
 LAND. BEET STOCK. BROKERAGE.

Maps Provided By:  
  
 CUSTOMIZED ONLINE MAPPING  
 © AgriData, Inc. 2025 www.AgriDataInc.com



Soils data provided by USDA and NRCS.

Area Symbol: ND091, Soil Area Version: 30

Code	Soil Description	Acres	Percent of field	PI Legend	Non-Irr Class *c	Productivity Index
G143B	Barnes-Svea loams, 3 to 6 percent slopes	78.21	26.1%		Ile	79
G101A	Hamerly-Wyard loams, 0 to 3 percent slopes	64.41	21.5%		Ile	74
G100A	Hamerly-Tonka complex, 0 to 3 percent slopes	54.15	18.0%		Ile	61
G119A	Vallers-Hamerly loams, saline, 0 to 3 percent slopes	53.20	17.7%		IVw	42
G167B	Balaton-Wyard loams, 0 to 6 percent slopes	22.60	7.5%		Ile	73
G143C	Barnes-Buse-Langhei loams, 6 to 9 percent slopes	15.70	5.2%		IVe	57
G144B	Barnes-Buse loams, 3 to 6 percent slopes	7.94	2.6%		IIIle	71
G12A	Vallers, saline-Parnell complex, 0 to 1 percent slopes	3.82	1.3%		IVw	31
G3A	Parnell silty clay loam, 0 to 1 percent slopes	0.22	0.1%		Vw	25
Weighted Average					<b>2.51</b>	<b>65.7</b>

\*c: Using Capabilities Class Dominant Condition Aggregation Method

Disclosure: Soils map boundaries are drawn estimates and are not 100% accurate.



# AERIAL MAP



United States  
Department of  
Agriculture

Griggs County, ND

Farm 4231



- Tract Boundary
- PLSS
- Noncropland
- Cropland

## Wetland Determination Identifiers

- Restricted Use
- ▼ Limited Restrictions
- Exempt from Conservation
- Compliance Provisions

## Unless Otherwise Noted:

- Barley = Spring for Grain
- Canola = Spring for Processing
- Corn = Yellow for Grain
- Flax = Common for Grain
- Oats = Spring for Grain
- Soybeans = Common for Grain
- Sunflowers = Oil for Grain
- Wheat = Spring for Grain
- All fields are non-irrigated
- Shares are 100% to operator

2025 Program Year  
Phy. County: Steele  
2023 imagery

**S25 T146N R57W**

0 340 680  
Ft

United States Department of Agriculture (USDA) Farm Service Agency (FSA) maps are for FSA Program administration only. This map does not represent a legal survey or reflect actual ownership; rather it depicts the information provided directly from the producer and/or National Agricultural Imagery Program (NAIP) imagery. The producer accepts the data 'as is' and assumes all risks associated with its use. USDA-FSA assumes no responsibility for actual or consequential damage incurred as a result of any user's reliance on this data outside FSA Programs. Wetland identifiers do not represent the size, shape, or specific determination of the area. Refer to your original determination (CPA-026 and attached maps) for exact boundaries and determinations or contact USDA Natural Resources Conservation Service (NRCS). USDA is an equal opportunity provider, employer, and lender.

Map Created 04/16/2025

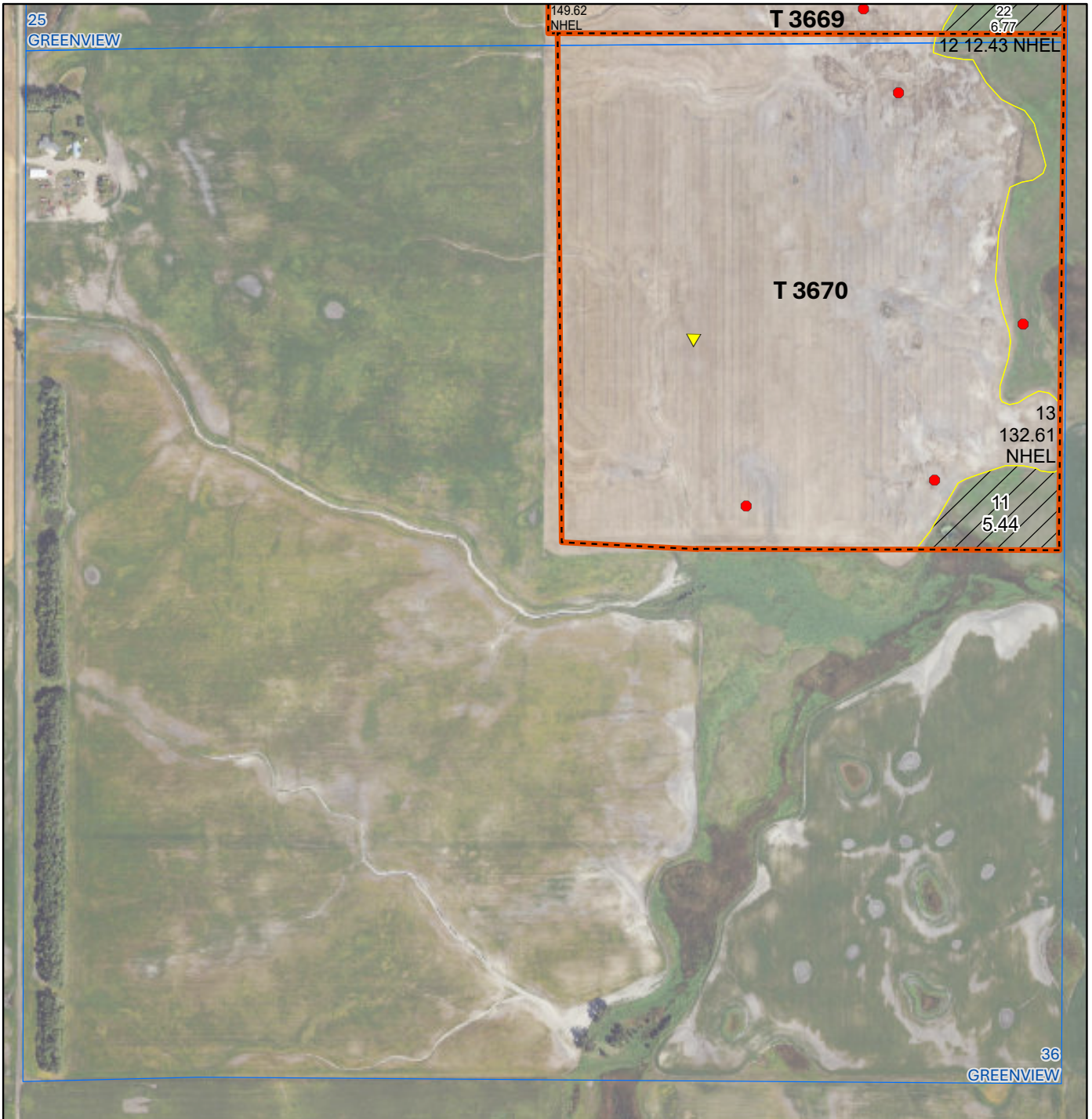
# AERIAL MAP



United States  
Department of  
Agriculture

Griggs County, ND

Farm 4231



- Tract Boundary
- PLSS
- Noncropland
- Cropland

## Wetland Determination Identifiers

- Restricted Use
- ▼ Limited Restrictions
- Exempt from Conservation
- Compliance Provisions

## Unless Otherwise Noted:

- Barley = Spring for Grain
- Canola = Spring for Processing
- Corn = Yellow for Grain
- Flax = Common for Grain
- Oats = Spring for Grain
- Soybeans = Common for Grain
- Sunflowers = Oil for Grain
- Wheat = Spring for Grain
- All fields are non-irrigated
- Shares are 100% to operator

2025 Program Year  
Phy. County: Steele  
2023 imagery

**S36 T146N R57W**

0 340 680  
Ft

United States Department of Agriculture (USDA) Farm Service Agency (FSA) maps are for FSA Program administration only. This map does not represent a legal survey or reflect actual ownership; rather it depicts the information provided directly from the producer and/or National Agricultural Imagery Program (NAIP) imagery. The producer accepts the data 'as is' and assumes all risks associated with its use. USDA-FSA assumes no responsibility for actual or consequential damage incurred as a result of any user's reliance on this data outside FSA Programs. Wetland identifiers do not represent the size, shape, or specific determination of the area. Refer to your original determination (CPA-026 and attached maps) for exact boundaries and determinations or contact USDA Natural Resources Conservation Service (NRCS). USDA is an equal opportunity provider, employer, and lender.

Map Created 04/16/2025





LAND. BEET STOCK. BROKERAGE.

# 320 +/- Acres Sealed Bid Sale Greenview Township Steele County, North Dakota

**Legal Descriptions:** SE1/4 of Section 25 & NE1/4 of Section 36, T146 R57W

**Bid Process:** No oral bidding. Please submit your best offer.

**Bid Deadline:** 9:00 am (Central Time) Friday, February 13, 2026.

**Bid Submission:** Email: [jayson.menke@acresandshares.com](mailto:jayson.menke@acresandshares.com)  
Mail or in person: Acres & Shares, LLC  
1397 Library Circle, Suite 102, Grand Forks, ND 58201

**Terms:** Cash sale. No Contingencies. Previous sellers reserved 100% of mineral rights. Sellers reserve the right to accept or reject and all offers and modify bidding requirements.

**Successful Bidder**

**Requirements:** Signed Purchase Agreement. Ten (10) percent earnest check.

**Closing:** Balance due March 24, 2026, after fully executed Purchase Agreement(s). Sellers will provide Warranty Deed and updated abstract(s) of title evidencing marketable title.

**Contact Information:** Jayson Menke  
(218) 779-1293  
[jayson.menke@acresandshares.com](mailto:jayson.menke@acresandshares.com)  
[www.acresandshares.com](http://www.acresandshares.com)



LAND. BEET STOCK. BROKERAGE.

## Sealed Bid Form

The undersigned Bidder proposes and agrees, if Bid(s) below is accepted, to enter into a written Purchase Agreement(s) and tender earnest money in the amount of 10% of the total purchase price. Bidder further acknowledges there is no oral bidding. Previous sellers reserved 100% of mineral rights.

SE1/4 of Section 25 & NE1/4 of Section 36, T146 R57W                      \$\_\_\_\_\_

\_\_\_\_\_  
Bidder's signature

\_\_\_\_\_  
Date

Bidder's Name\_\_\_\_\_

Address\_\_\_\_\_

City/State/Zip\_\_\_\_\_

Cell Phone\_\_\_\_\_

Email\_\_\_\_\_

Bid Process: No oral bidding. Please submit your best offer.

Bid Deadline: No later than 9:00 am (Central Time) Friday, February 13, 2026.

Bid Submission:	Email:	<a href="mailto:jayson.menke@acresandshares.com">jayson.menke@acresandshares.com</a>
	Mail or in person:	Acres & Shares, LLC 1397 Library Circle, Suite 102 Grand Forks, ND 58201

Additional Contact Information:

Jayson Menke  
(218) 779-1293  
[www.acresandshares.com](http://www.acresandshares.com)